



ECOTONE

Cotone povero morbido disponibile in 25 splendidi colori che rallegrano il guardaroba già da febbraio con borse, maglie, cardigan.

Composizione: 96% cotone 5% altre fibre

Peso / misure: Gomitolo da 100 gr mt 150 in confezione da 500g

Ferri: Ferri: 5 / 6 mm 10 cm = 10m x 12f maglia rasata dir



SCARICA LA
SCHEDA PDF

CATALOGO FILATI

1



2



103



44



69



300



33



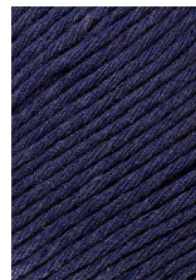
8



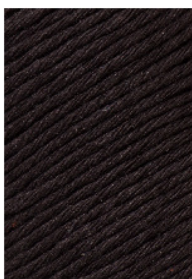
11



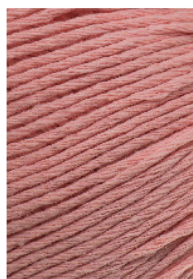
29



25



12



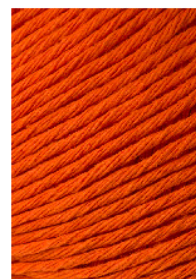
32



5



18



13



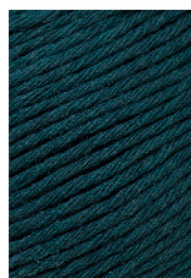
26



24



57



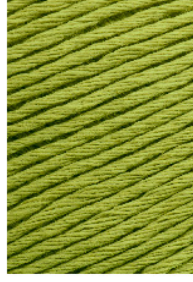
357



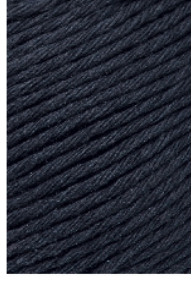
20



31



107



97



37

